

Accessing MyMaps REST Services

MyMaps is the Sunshine Coast Council's regional mapping system and provides the community with quick and easy access to relevant and useful Council information in the form of interactive maps. As well as accessing the information through these maps users can also access this same information via REST Services; and adding these REST Services to different software applications.

Outlined below are three methods to consume REST services:

1. ArcGIS.com Maps (through the REST page interface)
2. [ArcGIS Online](#)
3. ArcGIS Desktop

Note: there are other ways to view the data via the REST services page. This document looks at three of them.

Accessing the REST Service

To access Council's REST Services go to:

<http://gisservices.scc.qld.gov.au/arcgis/rest/services/>

Services are grouped into different categories. Browse through each category until you find the service you are interested in. You can then click through the service to find out what layers are included in the service.

ArcGIS REST Services Directory

[Home](#) > [services](#)

[JSON](#) | [SOAP](#)

Folder: /

Current Version: 10.2

View Footprints In: [ArcGIS.com Map](#)

Folders:

- [Administration](#)
- [Biota](#)
- [Boundaries](#)
- [Elevation](#)
- [Emergency](#)
- [Environment](#)
- [Farming](#)
- [Geophysical](#)
- [Health](#)
- [ImageryBaseMapsEarthCove](#)
- [InlandWaters](#)
- [Locations](#)
- [Maximo](#)
- [Oceans](#)
- [PlanningCadastr](#)
- [Society](#)
- [Staging](#)
- [Structure](#)
- [Transportation](#)
- [Utilities](#)
- [UtilitiesCommunication](#)

Services:

- [AddressLocator](#) (GeocodeServer)
- [PrintingTools](#) (GPService)
- [StreetLocator](#) (GeocodeServer)

Supported Interfaces: [REST](#) [SOAP](#) [Sitemap](#) [Geo Sitemap](#)

ArcGIS REST Services Directory

[Home](#) > [services](#) > [PlanningCadastr](#) > [ParcelInformation_SCRC \(MapServer\)](#)

[JSON](#) | [SOAP](#) | [WMS](#)

PlanningCadastr/ParcelInformation_SCRC (MapServer)

View In: [ArcGIS JavaScript](#) [ArcGIS.com Map](#) [Google Earth](#) [ArcMap](#) [ArcGIS Explorer](#)

View Footprint In: [ArcGIS.com Map](#)

Service Description: Parcel Information for the Sunshine Coast Region.

Map Name: Sunshine Coast, QLD Australia

[Legend](#)

[All Layers and Tables](#)

Layers:

- [Covenants](#) (0)
- [Easements](#) (1)
- [Council Leases](#) (2)
- [Land Parcel Boundaries](#) (3)
- [Land Parcel Boundaries \(Aerial\)](#) (4)

Description: Parcel Information for the Sunshine Coast Region.

Copyright Text: Sunshine Coast Regional Council

ArcGIS REST Services Directory

[Home](#) > [services](#) > [PlanningCadastr](#)

[JSON](#) | [SOAP](#)

Folder: PlanningCadastr

Current Version: 10.22

View Footprints In: [ArcGIS.com Map](#)

Services:

- [PlanningCadastr/Applications_SCRC](#) (MapServer)
- [PlanningCadastr/EndorsedStrategies_SCRC](#) (MapServer)
- [PlanningCadastr/Labels_SCRC](#) (MapServer)
- [PlanningCadastr/LandUse_SCRC](#) (MapServer)
- [PlanningCadastr/ParcelInformation_SCRC](#) (MapServer)
- [PlanningCadastr/PlanningScheme_SunshineCoast_Boundaries_SCRC](#) (MapServer)
- [PlanningCadastr/PlanningScheme_SunshineCoast_Index_SCC](#) (MapServer)
- [PlanningCadastr/PlanningScheme_SunshineCoast_Overlays_SCC](#) (MapServer)
- [PlanningCadastr/PlanningScheme_SunshineCoast_Zoning_SCC](#) (MapServer)

Supported Interfaces: [REST](#) [SOAP](#) [Sitemap](#) [Geo Sitemap](#)

ArcGIS.com Maps (through the REST page interface)

If you do not have access to the ArcGIS Desktop suit then this is a very simple method of looking at the data.

After you have found which service you are interested in (see notes above) you can then open the REST service in a simple viewer by clicking the **ArcGIS.com Map** link.

You can then zoom in / out, pan around and print.

This method only allows you to view one REST service at a time.

ArcGIS REST Services Directory

[Home](#) > [services](#) > [Boundaries](#) > [Boundaries_SCRC \(MapServer\)](#)

[JSON](#) | [SOAP](#) | [WMS](#)

Boundaries/Boundaries_SCRC (MapServer)

View In: [ArcGIS JavaScript](#) [ArcGIS.com Map](#) [Google Earth](#) [ArcMap](#) [ArcGIS Explorer](#)

View Footprint In: [ArcGIS.com Map](#)

Service Description: Localities, Council Divisions, State Electoral Boundaries, State Fire Boundaries, Catchment Areas

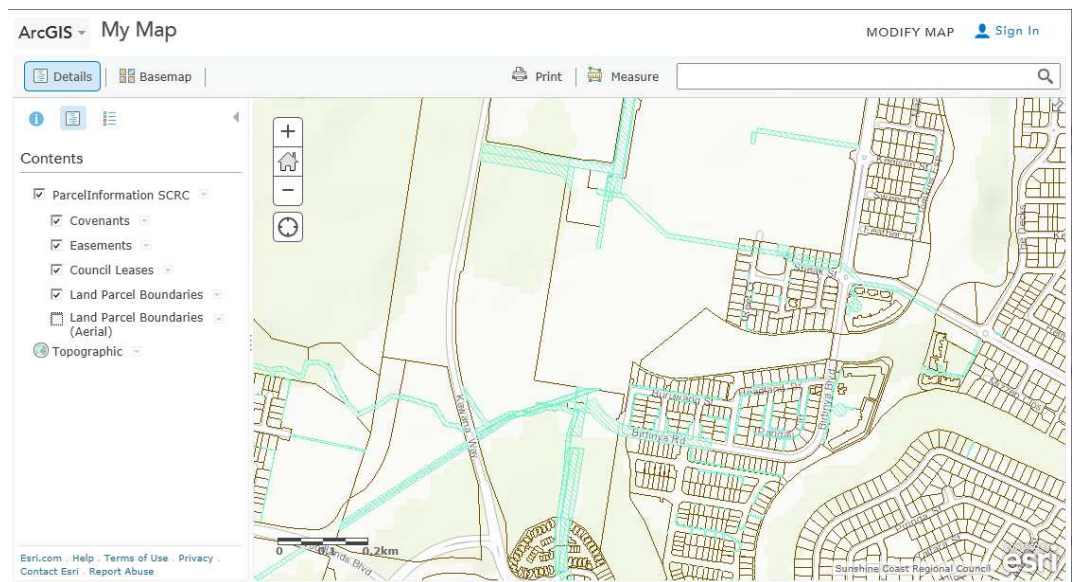
Map Name: Boundaries

[Legend](#)

[All Layers and Tables](#)

Layers:

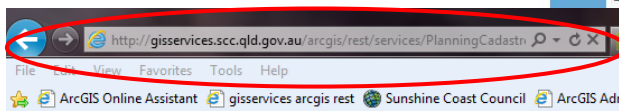
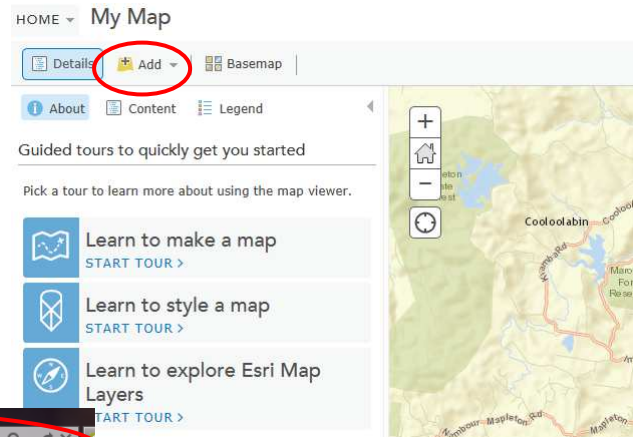
- [Electoral Divisions \(Council-2012\)](#) (0)
- [Electoral Divisions \(Council-2008\)](#) (1)
- [Electoral Divisions \(State\)](#) (2)
- [Localities](#) (3)
- [Local Government Areas](#) (4)



ArcGIS Online

If you wish to view many REST Service together at the same time you will need to have a subscription to ArcGIS Online. Once you have set up your account you can then copy and paste the REST Service URL into the map. This also gives you access to a bit more functionality.

1. Open [ArcGIS Online](#) and login in
2. Create a new map
3. Click the ADD button
4. Choose Add Layer from Web
5. Copy the URL from the REST page
6. Paste the URL into the dialog box.
7. Repeat for all services you require.



ArcGIS REST Services Directory

[Home](#) > [services](#) > [PlanningCadastr](#) > [ParcelInformation_SCRC \(MapSe](#)

[JSON](#) | [SOAP](#) | [WMS](#)

PlanningCadastr/ParcelInformation_SCRC (Map

View In: [ArcGIS JavaScript](#) [ArcGIS.com Map](#) [Google Earth](#) [ArcMap](#)

View Footprint In: [ArcGIS.com Map](#)

Service Description: Parcel Information for the Sunshine Coast Region.

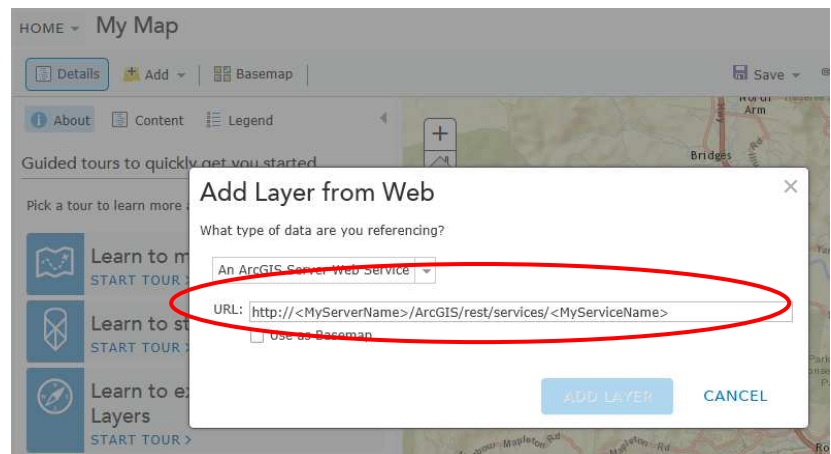
Map Name: Sunshine Coast, QLD Australia

[Legend](#)

[All Layers and Tables](#)

Layers:

- [Covenants](#) (0)
- [Easements](#) (1)
- [Council Leases](#) (2)
- [Land Parcel Boundaries](#) (3)



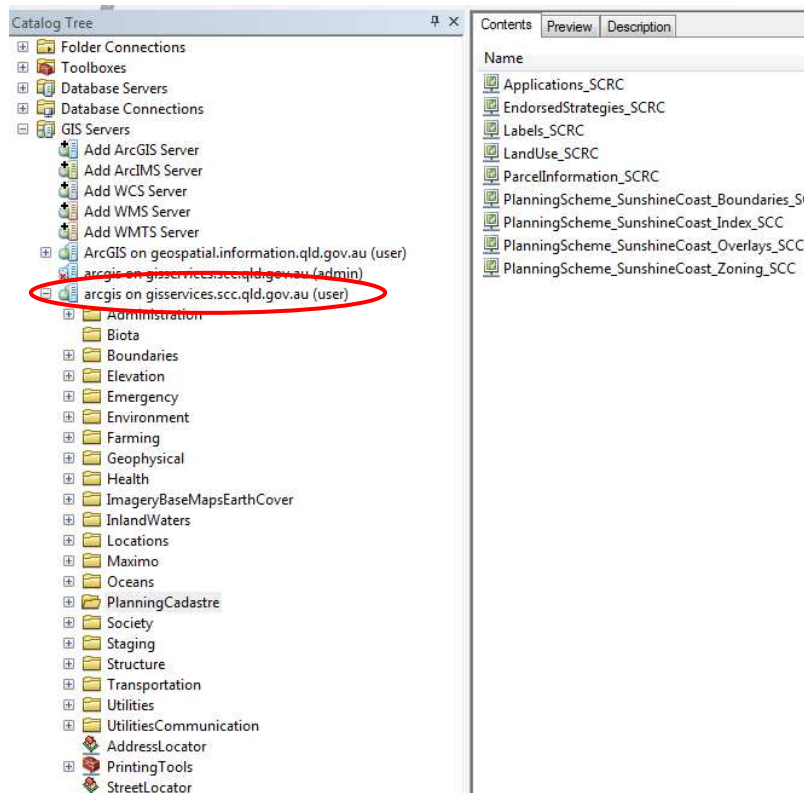
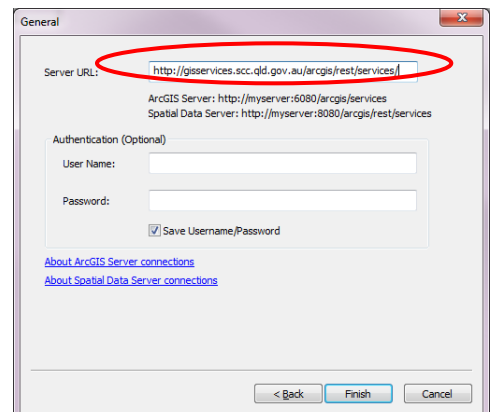
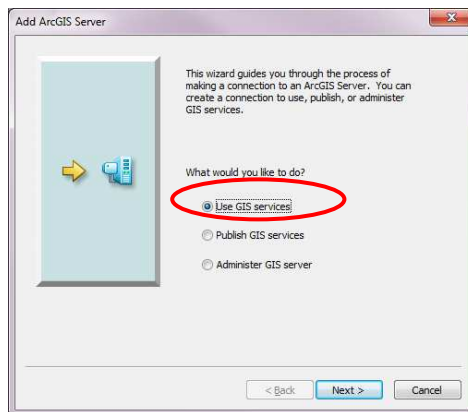
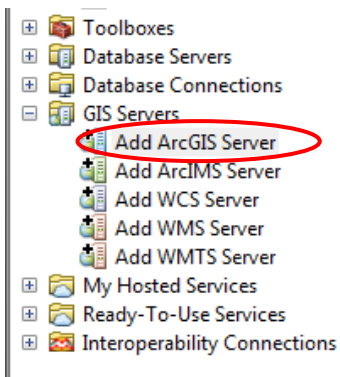
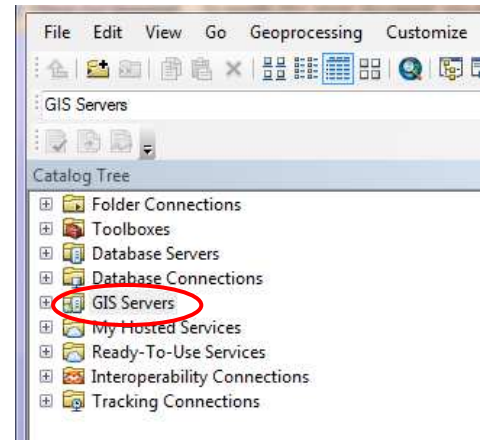
ArcGIS Desktop

If you have access to ESRI's ArcGIS Desktop suite of programs you can connect to an ArcGIS Server. You first need to connect to the ArcGIS Server then you can add a service into your map document.

1. Open ArcCatalog and expand the GIS Servers folder
2. Click Add ArcGIS Server
3. Choose 'Use GIS Services' and click Next
4. Copy and paste the following URL:

<http://gisservices.scc.qld.gov.au/arcgis/rest/services/>

5. Click Finish
6. Click on the new connection to see the available information



Sunshine Coast Council
www.sunshinecoast.qld.gov.au
mail@sunshinecoast.qld.gov.au
T 07 5475 7272 F 07 5475 7277
Locked Bag 72 Sunshine Coast Mail Centre Qld 4560